

DORMA

**TS93 & TS92
Correctional
Facility
Door Closer**



The perfect project solution for high security application needs

The TS 93 & TS92 cam action door closer systems sets new standards in user convenience in project applications. The proven DORMA technology of the heart-shaped cam ensures exceptional ease of opening whilst maintaining efficient closing strengths for secure environments unmatched by rack and pinion closers with slide channel.

...for the trade

- Clear product allocation ensures use of the right models for the right applications.
- Non handed cover.

...for the installer

- The TS 93 and TS92 closers are suitable for all fixing positions.
- Mounting bracket with universal fixing hole pattern for optimal fixing.
- Simple, installation

Dorma developed the TS92 and TS93 correctional facility closer cover in response to growing needs for greater security and vandalism of door closers in high security areas. Hiding places for contraband and the well being of inmates are just some of the reasons for consideration when next selecting door closers for high secure areas.

...for the specifier/architect

- Stainless Steel Cover manufactured with robust metal cover
- Cover ends are welded to reduce contraband recesses.
- Security screws hold in place the cover, limiting unwanted removal.
- One cover suits all three models listed and is non handed.
- Cam action closers provide strong secure latching efficiency.

Data and Technical Features

TS92 & TS93 B/G

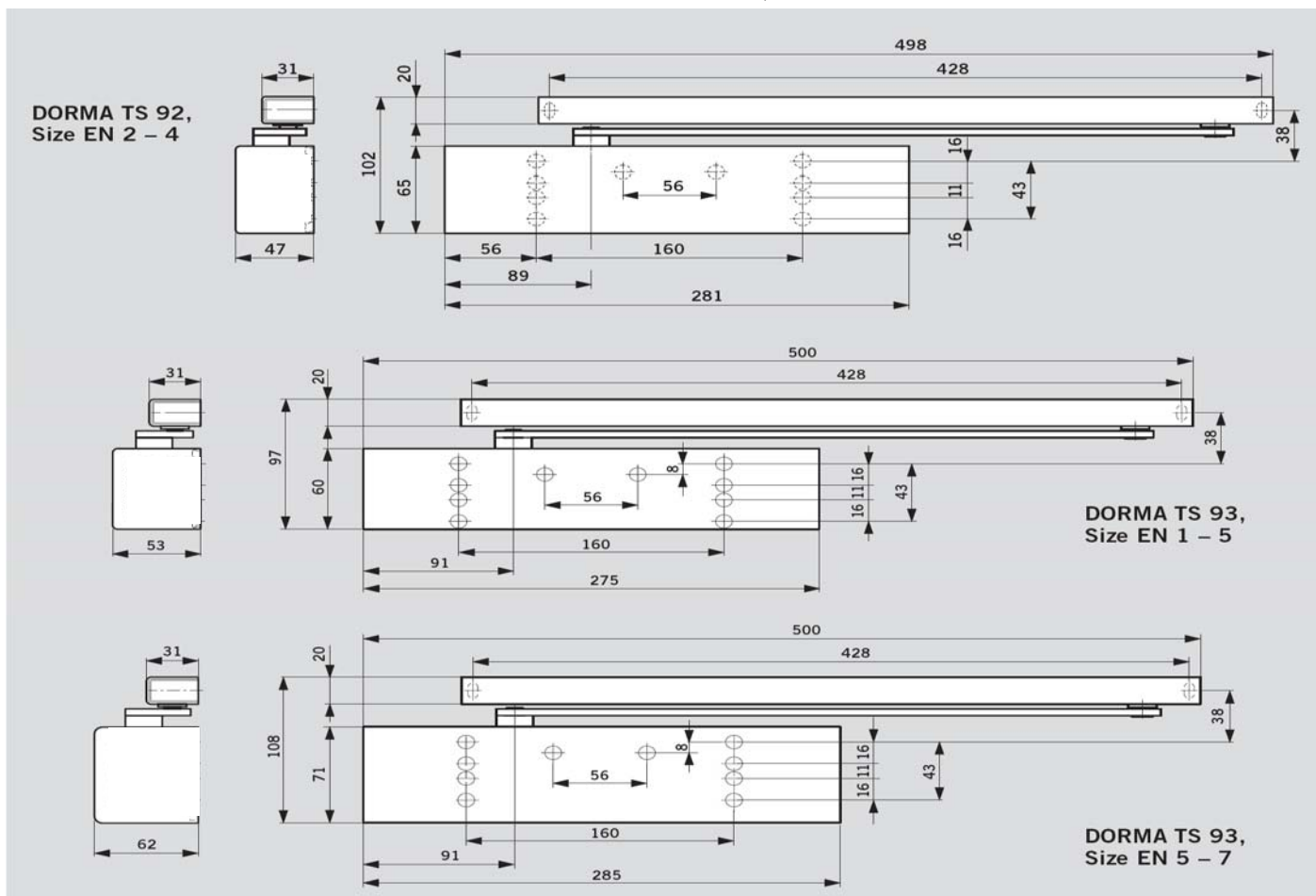
Variable closing force	Spring strength	2-4	1-5	5-7
Standard doors ²⁾	≤1100 mm	●	-	-
	≤1250 mm	-	●	-
	≤1600 mm	-	-	●
External doors, outward opening ²⁾	≤1100 mm	-	-	-
	≤1250 mm	-	●	-
	≤1600 mm	-	-	●
For fire and smoke check doors ²⁾	≤1100 mm	○	-	-
	≤1250 mm	-	●	-
	≤1600 mm	-	-	●
Non-handed		●	●	●
Arm assembly type	Standard	-	-	-
	Slide channel	●	●	●
Closing force variable by means of adjustment screw		●	●	●
Closing speed adjustable by valve		●	●	●
Latching speed adjustable	at arm	-	-	-
	at valve	●	●	●
Backcheck (BC/ÖD)	adjustable	-	●	●
	at valve	-	●	●
Cushioned Limiting Stop (Mechanical)		○	○	○
Delayed action (DC/SV) adjustable at valve		-	●	●
		-	●	●
Hold-open		○	○	○
Weight in kg		2	3,5	5,2
Dimensions in mm	Length (L)	281	275	285
	Overall depth (B)	47	53	62
	Height (H)	65	60	71
Approved to AS1905 Part 1 Fire resistant doors		○	●	●
Door closer tested to EN 1154		●	●	●
CE mark for building products		●	●	●

● yes - no ○ option

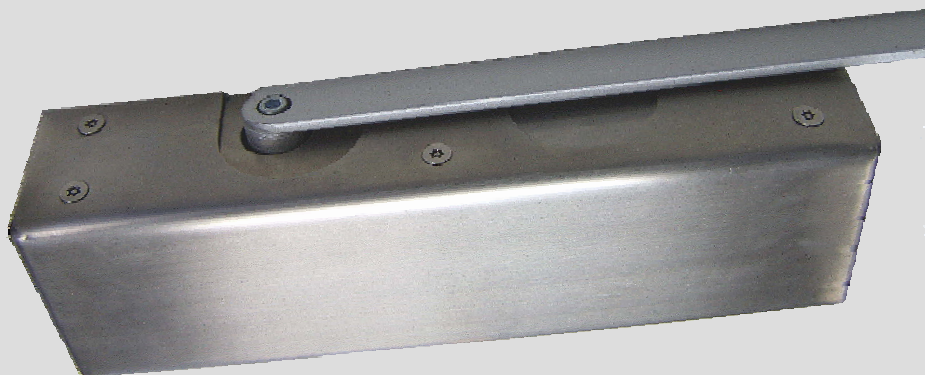
1) B = Standard model for pull-side door leaf fixing/push-side transom fixing.

G = Special model for push-side door leaf fixing/pull-side transom fixing.

2) For particularly heavy doors and doors which have to close against wind resistance, we recommend the DORMA TS 93.

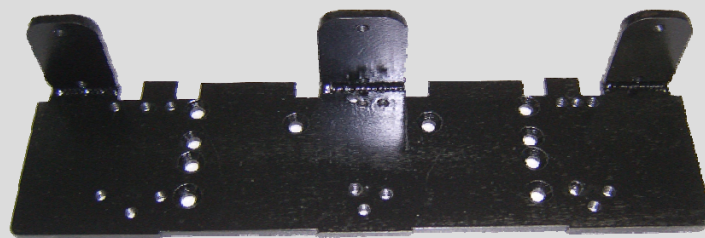
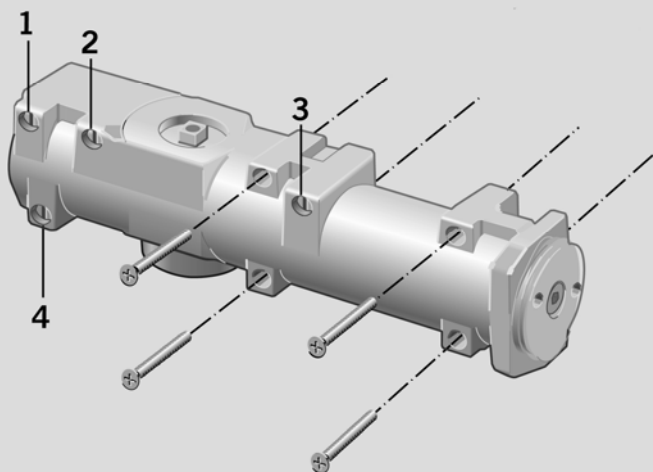


Stainless Steel Correctional Cover



- Cover manufactured with robust Stainless Steel Material of greater thickness.
- Rounded cover ends provide inmate safety and are welded to reduce contraband recesses.
- Anti tamper security screws hold in place the cover, limiting unwanted removal.
- Cover suits all three models TS93 EN1-5, TS93 EN5-7 and the TS92 EN2-4 and is non handed.
- Precise fit to the door closer body and around installation points for the arm reduce contraband hiding recesses.
- Using the slide channel cam action closer limits self harm points.

Correctional Cover Mounting Plate



- This mounting backplate with its universal hole system, including hole pattern to supplementary sheet 1 of DIN EN 1154 A, ensures ideal fixing whatever the conditions and irrespective of the door type. The fixing hole patterns are the same for both sizes of the DORMA TS 93 and the TS92. Additional mounting plates/brackets are no longer required.
- Only one mounting plate is required and this suits all three models the TS93 EN1-5, TS93 EN5-7 and the TS92 EN2-4 and further provides for secure fixing to the door by means of 10 fixing points.
- Cover fastens to the mounting plate with six anti tamper security screws.
- Mounting plate manufactured with robust steel and three fixing legs to retain the closer body.

How To Order

- Specify DORMA correctional closer cover with the model number of door closer being used.
- Cover pack includes anti tamper security screws, closer cover, mounting plate and cover infill sections.

www.dorma.com.au

DORMA Door Controls Pty Ltd

Head Office

Victorian & Tasmanian Sales Office

A.B.N 82 005 869 447
52 Abbott Road,
Hallam, Victoria
AUSTRALIA 3803
Telephone (03) 9796 3555
Facsimile (03) 9796 3955
Toll Free Facsimile 1800 333 309
www.dorma.com.au

New South Wales & A.C.T

Telephone (02) 9645 6455
Facsimile (02) 9645 4561

Queensland

Telephone (07) 3394 6810
Facsimile (07) 3394 2953

South Australia & Northern Territory

Telephone (08) 8289 3499
Facsimile (08) 8289 4463

Western Australia

Telephone (08) 9228 2322
Facsimile (08) 9228 2422

New Zealand

DORMA NZ Ltd
20 Sylvia Park Road
Mount Wellington
NEW ZEALAND
Telephone (09) 573 1999
Facsimile (09) 573 1991